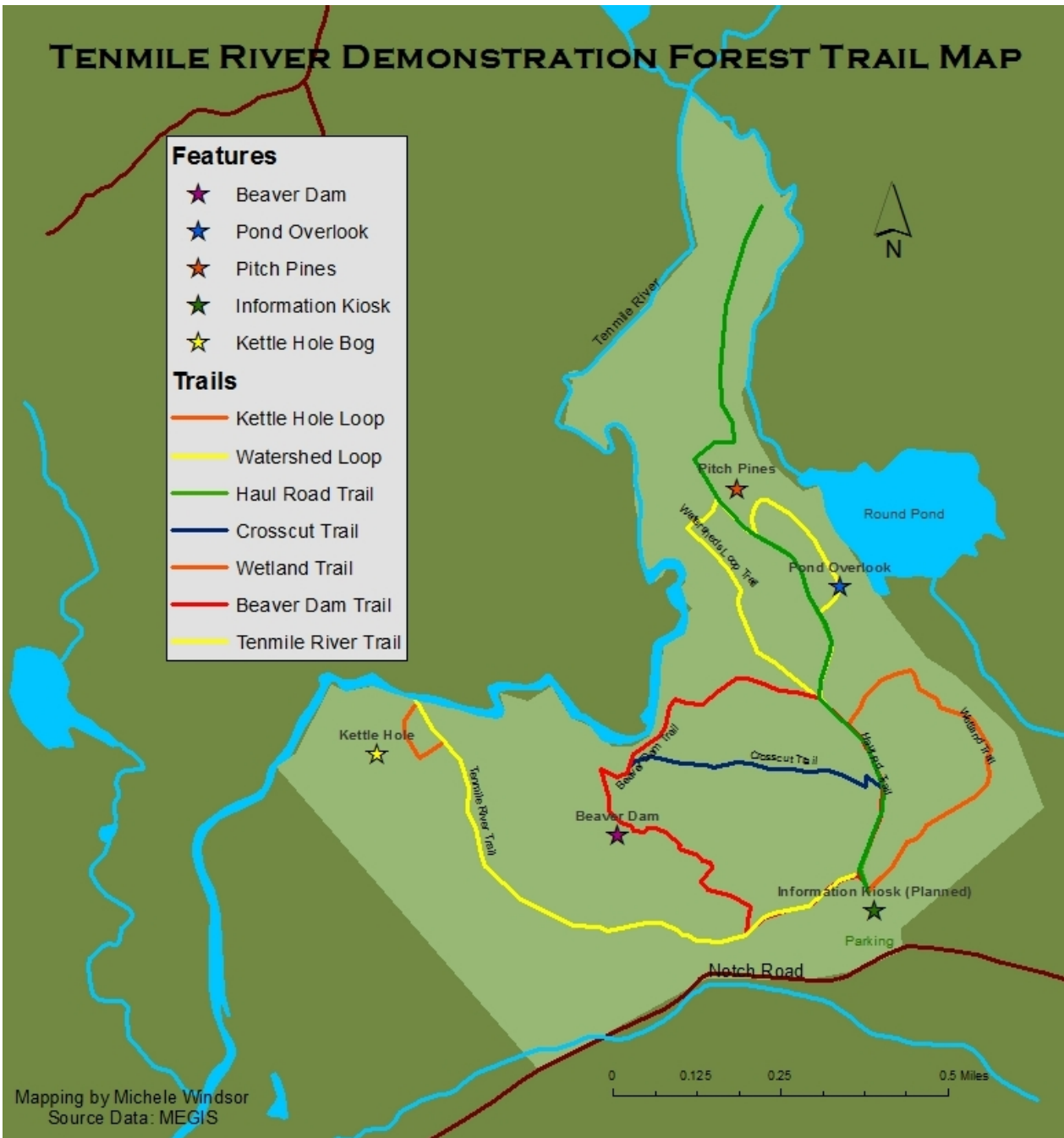
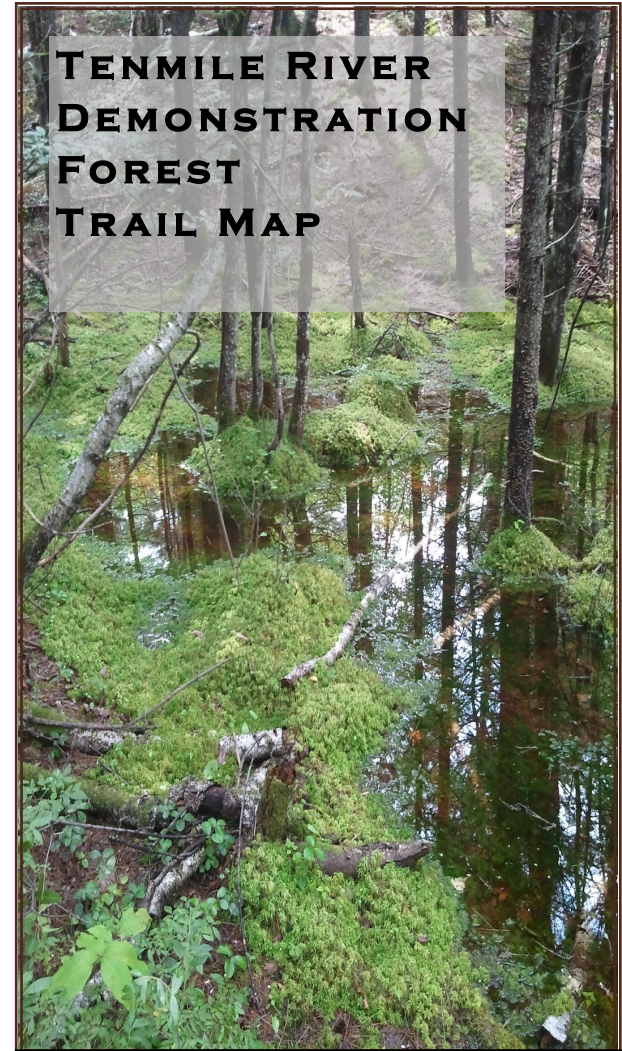


TENMILE RIVER DEMONSTRATION FOREST TRAIL MAP

- Features**
- ★ Beaver Dam
 - ★ Pond Overlook
 - ★ Pitch Pines
 - ★ Information Kiosk
 - ★ Kettle Hole Bog
- Trails**
- Kettle Hole Loop
 - Watershed Loop
 - Haul Road Trail
 - Crosscut Trail
 - Wetland Trail
 - Beaver Dam Trail
 - Tenmile River Trail



TENMILE RIVER DEMONSTRATION FOREST TRAIL MAP



*Dedicated to education
about forests, wildlife
habitat and water resources*

The Tenmile River Demonstration Forest is located at 600 Notch Rd. in Brownfield, ME on the Hiram/Brownfield town line.

It is owned and managed by the
Oxford County Soil & Water Conservation District
17 Olson Rd. Ste 3, South Paris, ME 04281
(207) 743-5789 X101

This project was funded in part by a grant from the Maine Outdoor Heritage Fund.

Tenmile River Demonstration Forest Trails



Haul Road Trail

Length: 1.72 mi. RT

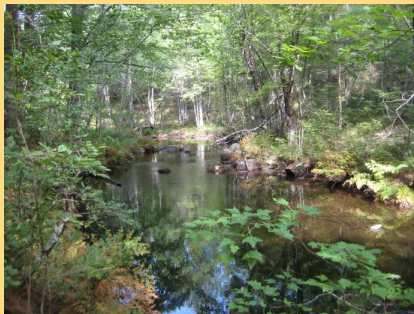
This trail serves as the "haul road" for transporting timber during the harvests. Care was taken to create waterbars along it so as to prevent erosion of soil. It runs the entire length of the parcel and travels through several stands of plantation pine planted during the early 1960s by the Conservation District. A string of Pitch Pines which thrived on the site after the fire can be seen on the slope on the eastern side of the trail.



Tenmile River Trail

Length: .65 mi.

This trail travels through some plantation stands and some natural stands of pine. It follows skidder trails that were created during the harvesting operations. Larger openings in the forest canopy were created during the last harvest to allow sunlight to get to the forest floor here to help the younger trees grow. Harvesting during the winter minimized soil disturbance. On the far end of the trail it traverses through the river floodplain before reaching the Tenmile River, a beautiful brook trout stream.



Kettle Hole Loop Trail

Length: .1 mi.

This trail takes you up to the rim of the kettle hole, a unique glacial feature formed over 10,000 years ago. A short spur trail descends to the Kettle Hole bog, with its spire-like black spruce and sphagnum moss carpet. A very special micro-habitat.



Beaver Dam Trail

Length: .57 mi. (Tenmile River Trail to Haul Rd. Trail)



The trail first travels along red pine plantation, then descends into natural forest and skirts along a beaver marsh where there's an old beaver dam. A more recently built beaver dam can be

seen on the Tenmile River further up the trail before it circles back through White Pine regeneration to return to the Haul Road Trail.

Crosscut Trail

Length: .3 mi.

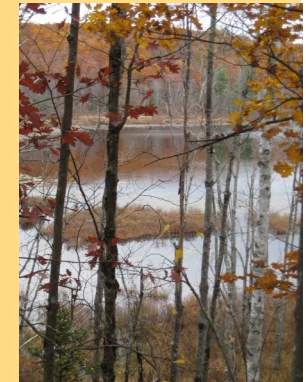
This trail is a shortcut from the Haul Rd. to the Beaver Dam Trail through straight rows of mature Red Pine planted in the 1960's. If you are very observant you may see Walking Sticks cruising through the lowbush blueberry ground cover.



Watersheds Loop Trail

Length: .54 mi.

This trail explores the two watersheds: Tenmile River and Round Pond. On the eastern side it follows the esker that separates the drainages. On the western side it travels through mature Red Pine Plantation. You'll notice there's a buffer of natural forest between the harvestable forest and the river. The Pond Overlook provides a view of Round Pond; a beaver-created shallow pond that provides habitat for ducks, geese and wading birds.



Wetland Trail

Length: .43 mi.

The plantation pine areas in the lower section were harvested in the spring of 2012. The logger created a more open forest so that sunlight could reach to forest floor to encourage new growth and mature seed trees were left to aid regeneration. The skidder trails were stabilized with slash and waterbars on the slopes to reduce erosion. The northern section of the trail winds through forested buffers that protect a wooded shrub bog and the riparian grassy marshlands of upper Round Pond Brook.

